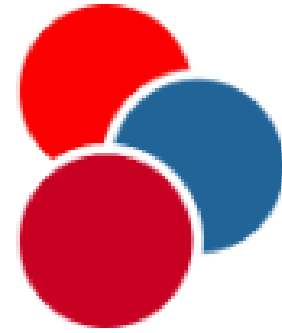
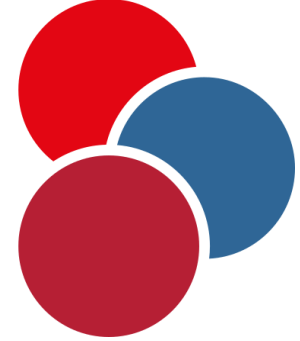


British Society for
Haematology
Listening • Learning • Leading



Dr Sue Pavord
President



Established in 1960
Registered charity,
With an associated company BSHE

Aims to transform patient care through
excellence in haematology

- Education
 - Networking
 - Advocacy
- 

Strategy 2024-2026

- Membership
- Knowledge sharing
- Strategic partnerships
- BSH infrastructure

Membership

3450 members

Open to anyone engaged in the practice or study of haematology,

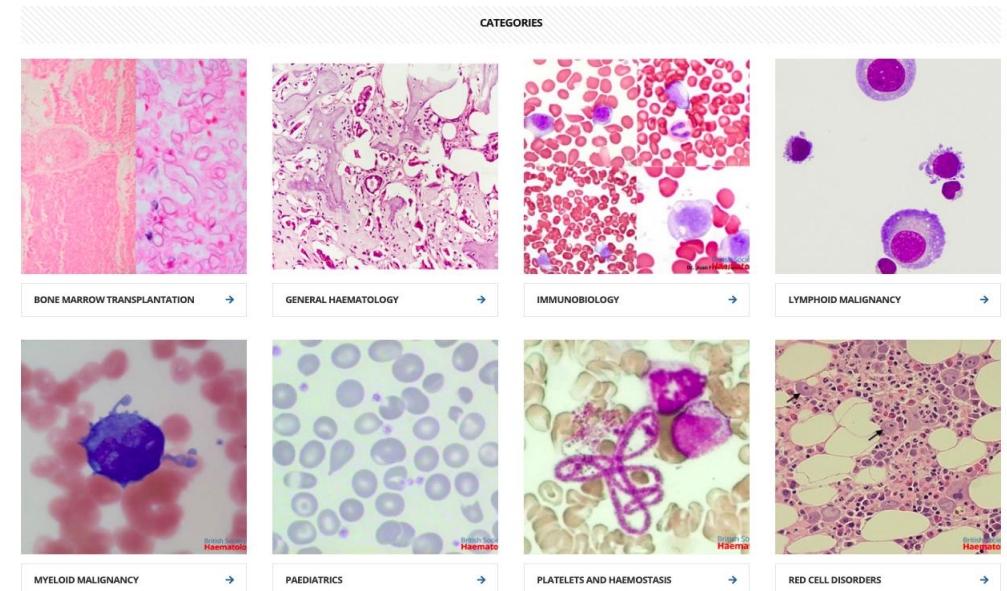
- undergraduates
- consultants and junior doctors,
- clinical and biomedical scientists,
- specialist nurses
- Physicians associates
- other allied health professionals.

Education

- ASM - around 2000 delegates
- other educational events – 18 in 2024, with 1550 delegates
- BSH guidelines – 2024 - 12 guidelines and 5 GPP
- British Journal of Haematology, (IF 8)
- Electronic Journal of Haematology (eJH)

Educational content on website

- Lectures
- Demonstration videos
- Practice questions – essays, MCQs, EMQs, case reports
- Image bank
- News items
- Guidelines
- Information about conferences and events



Grants

Annual Scientific Meeting Scholarships

ASH-BSH Abstract Achievement Award

Cohort Study Grant

Early-Stage Research Start-up Grants

Global Haematology Scholarship

Meeting Support

Student Elective Scholarships

Trainee Educational Bursaries

Travel Scholarships

Visiting Fellow

Registries

Name of database
Audit Tool - QS138 Quality Insights (Blood Transfusion)
Bedside Transfusion Audit
Blood Donation
Blood Sodium Study
Cord Blood Bank
Follicular lymphoma first line PETReA plus, ongoing registry
follicular lymphoma refractory
Idiopathic Thrombocytopenia Purpura registry
Mantle cell lymphoma
Myeloma
Myeloma
National aHUS Register
National Haemoglobinopathy Registry
National Haemophilia Database
National Immunoglobulin Database
Platelet Donation
POEMS syndrome
Serious Hazards of Transfusion
UK Paediatric Idiopathic Thrombocytopenia Purpura Registry
UK Primary Immunology Deficiency Registry
UK Thrombotic Thrombocytopenia Purpura Registry
Waldenstrom's Macroglobulinemia Registry
Non-Hodgkin Lymphoma

Special interest groups

Global Haematology SIG

Lymphoma SIG

Teenage and Young Adult SIG

Obstetric Haematology SIG

Paediatric SIG

Laboratory SIG

**New for 2025:
Supportive care SIG**

Committees

Communications

BSH Enterprises

Education

External Affairs

Finance Audit and Risk Committee

Guidelines

Programme

Research and Grants

Nominations, Governance and Awards Committee

Guideline writing groups
Sounding boards

Advocacy work

- Working collaboratively on projects with other organisations
- 25 BSH representatives on other organisations
- Input into consultations and surveys
- Workforce project

Workforce project

1. Workforce gap analysis
2. Practitioner wellbeing
3. Identification of solutions and improvements

Workforce project

Commissioned London South Bank University

Qualitative and quantitative research

5 research papers submitted

Identified areas of unseen work:

Liaison haematology and transfusion medicine

- Delphi study to Define liaison haematology

Identified emotional burden of haematology workforce

Aiming to influence policy, change job plans

Strategy Pillar 4

Infrastructure

- Income diversification
- Operational plan
- IT systems
- Sustainability