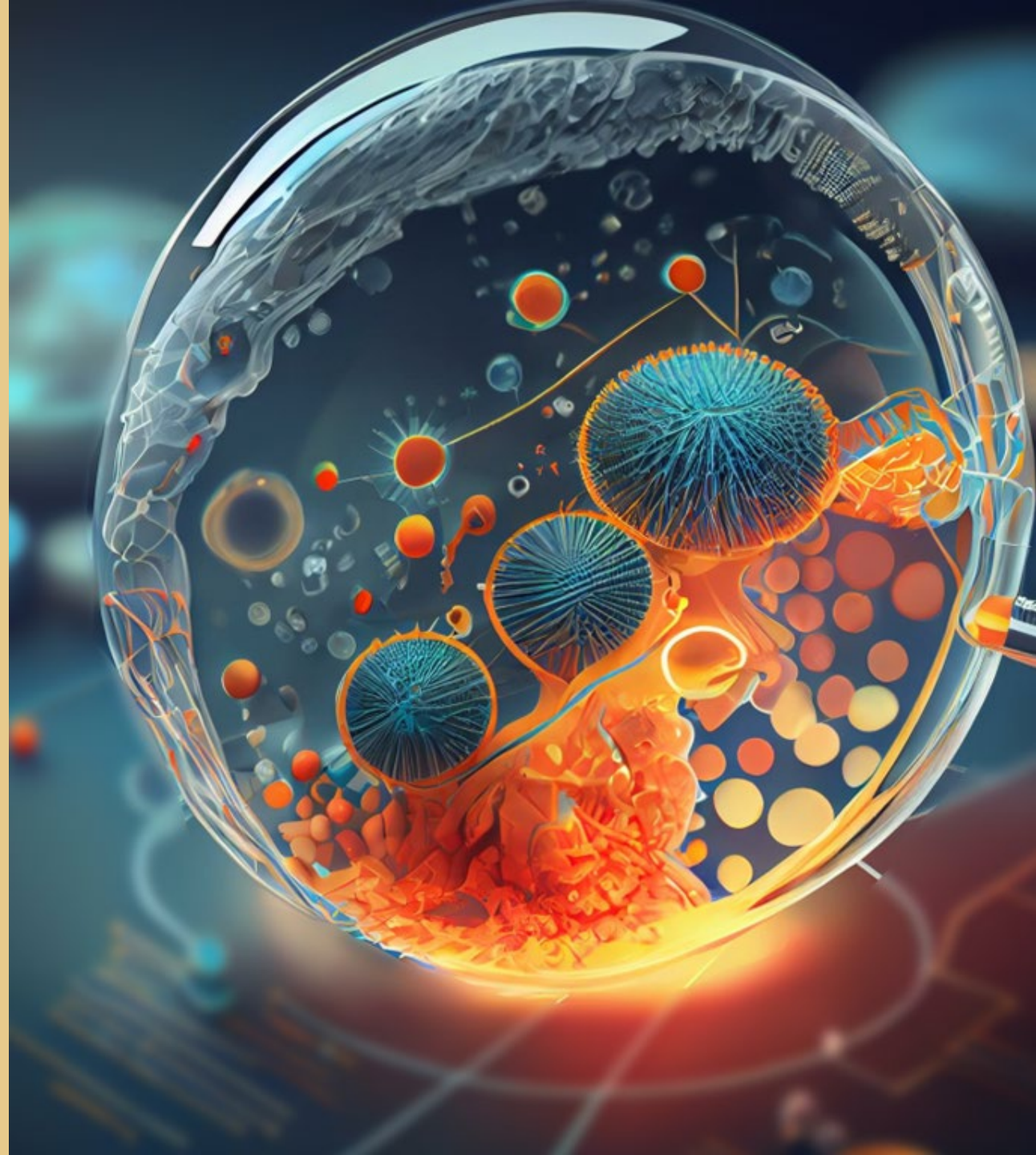


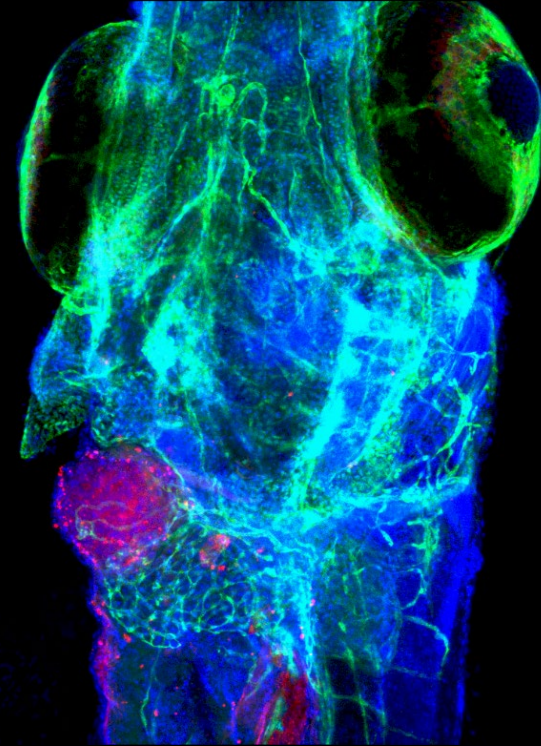


Zebrafish Avatars achieve  
over 90% accuracy in  
predicting patient response  
to therapy across CRC,  
breast, and ovarian cancer

**RITA FIOR**

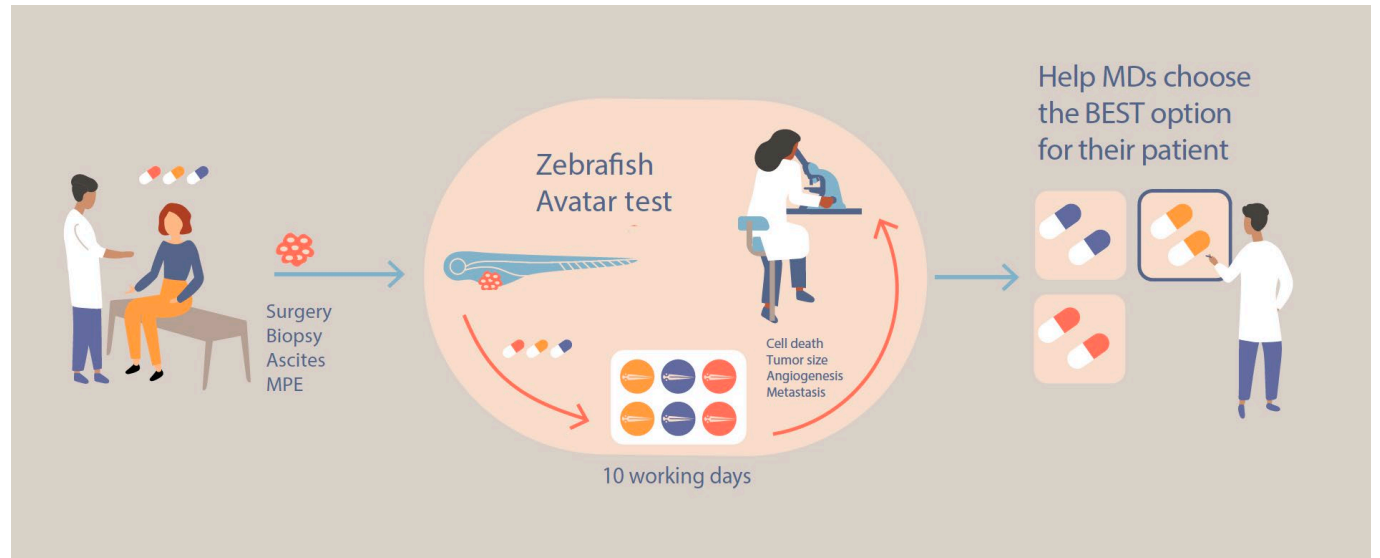
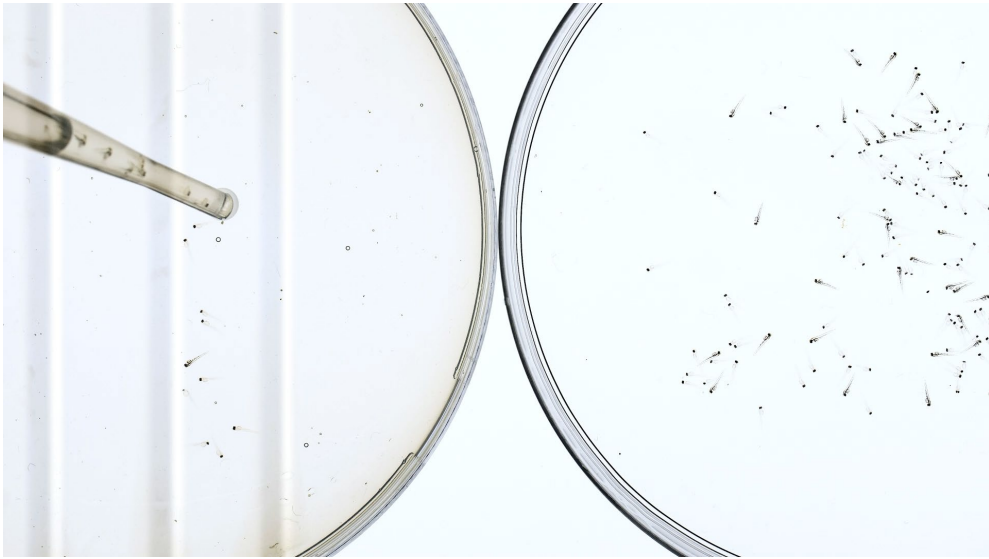


# DISCLOSURE / AFFILIATION



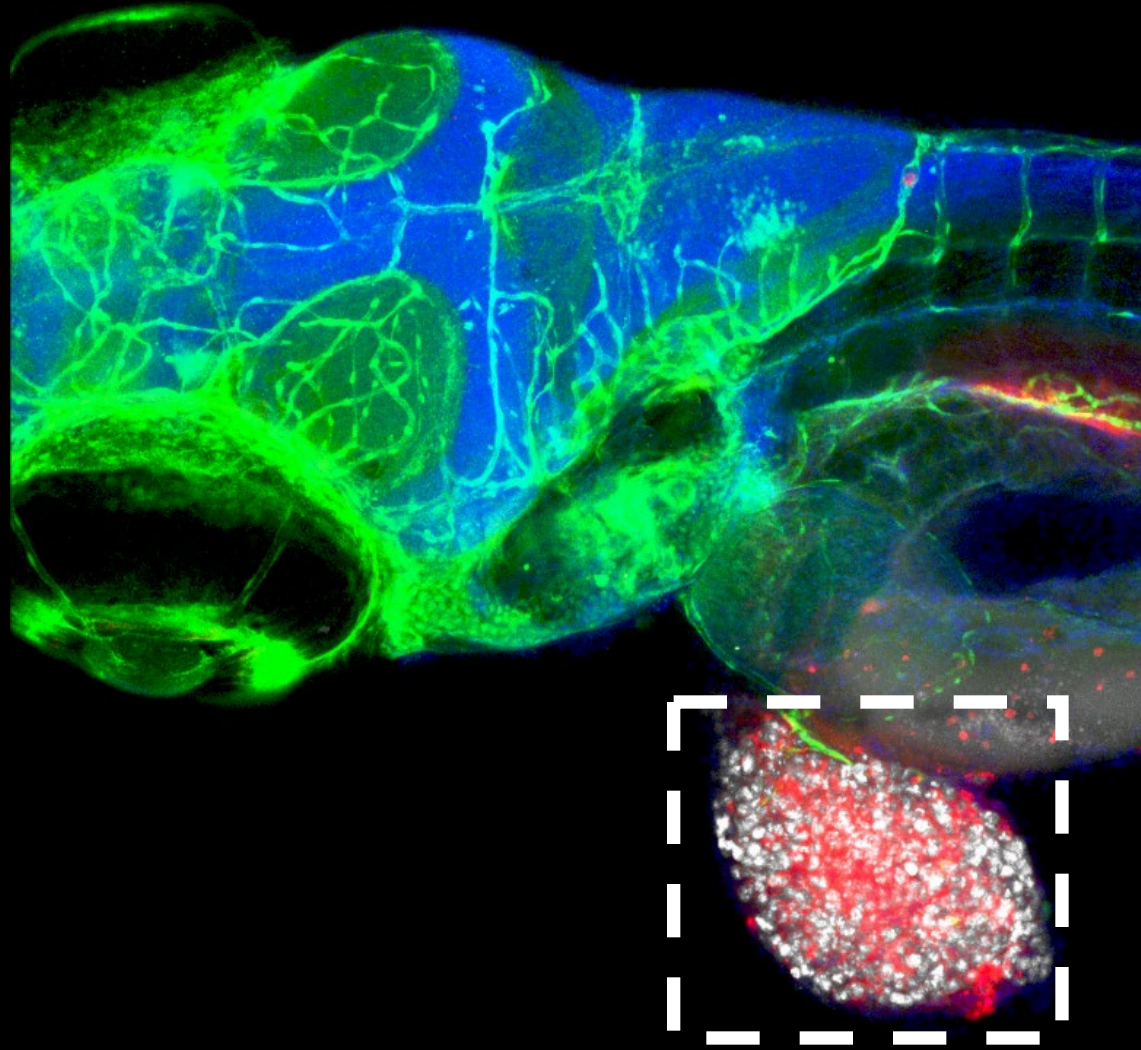
**Fundação  
Champalimaud**

# Zebrafish Avatars for personalized medicine

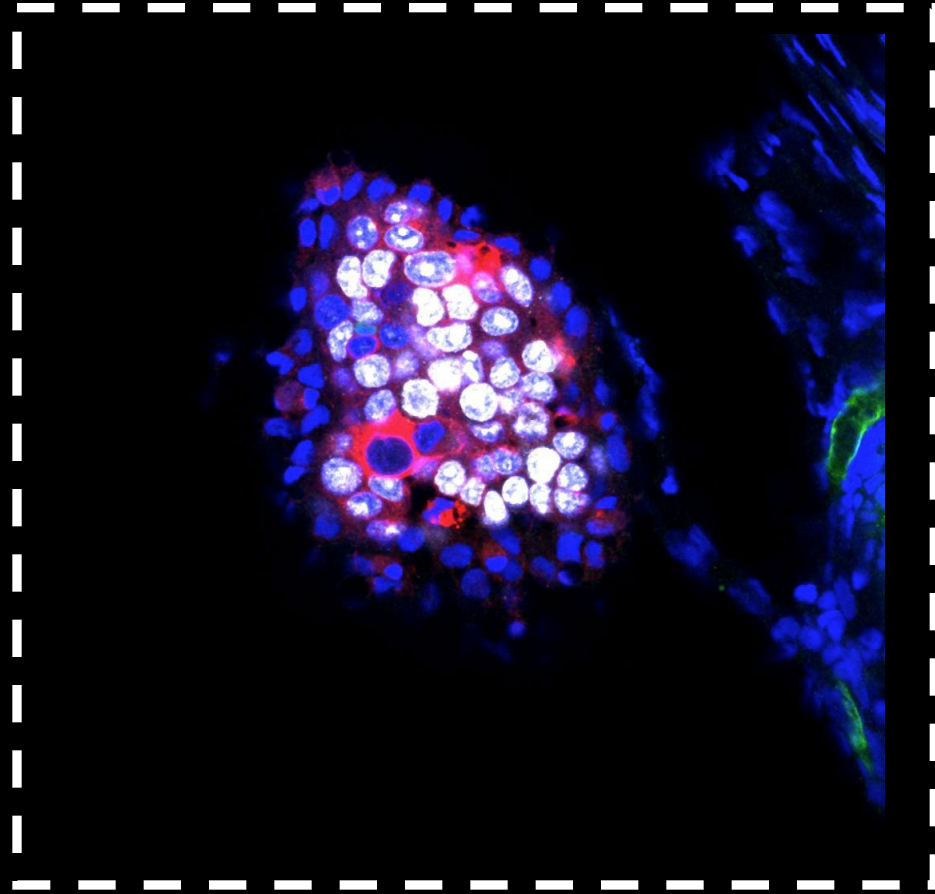


*Fior et al, PNAS 2017; Costa&Ferreira et al, EBiomedicine, 2019; Rebelo deAlmeida et al Comm Biol, 2020; Costa&Estrada et al, Cells, 2020; Varanda et al, Cancers, 2020; Martinez Lopez et al, JoVE 2021; Tavares Barroso et al, Cells, 2021; Póvoa et al Nature Communications 2021; Costa et al Current Protocols 2022; Costa et al Frontiers in Oncology 2022; Martinez Lopez et al BioArch in revision; Costa et al Nature Communications 2024*

# CONFOCAL IMAGING

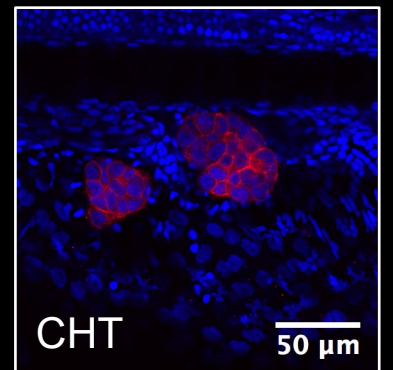
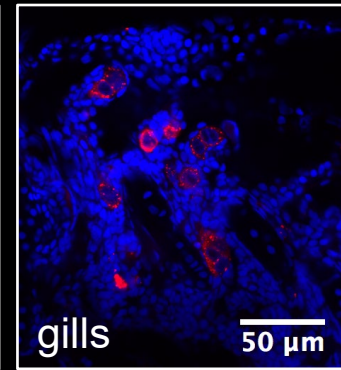
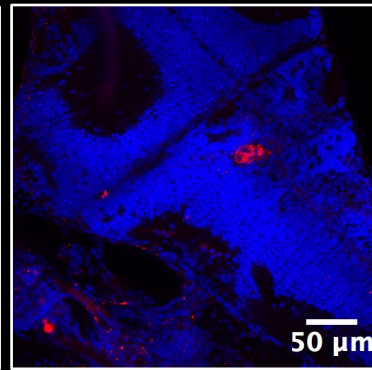
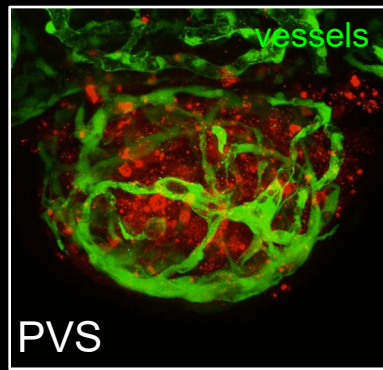
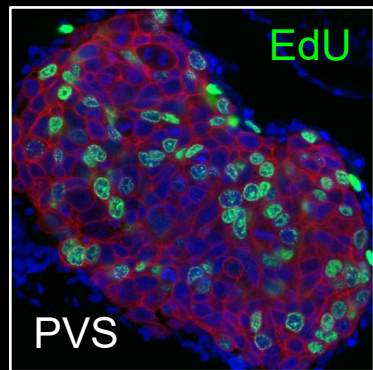
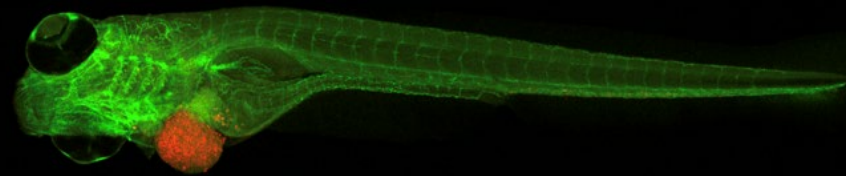


# SINGLE-CELL RESOLUTION

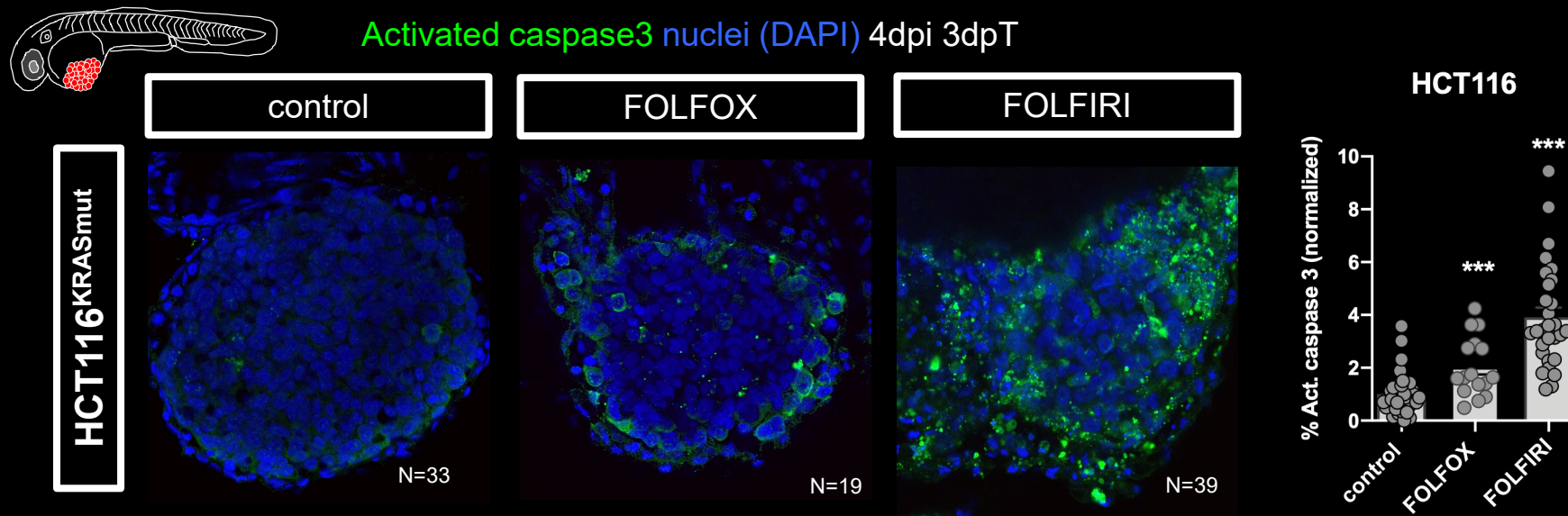


NUCLEI KI67 TUMOR CELLS

# Human tumor cells proliferate in zebrafish & invade distant sites

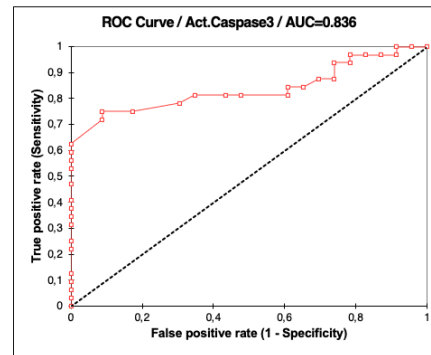
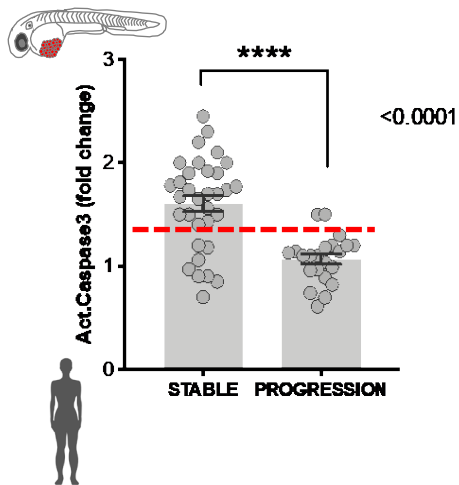
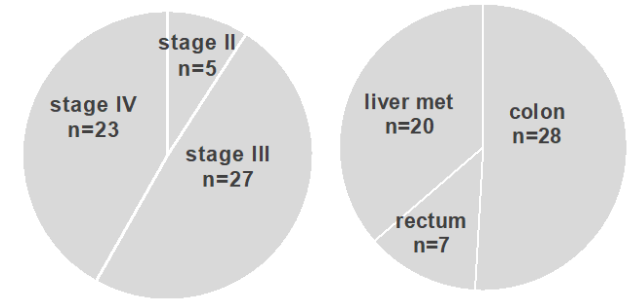
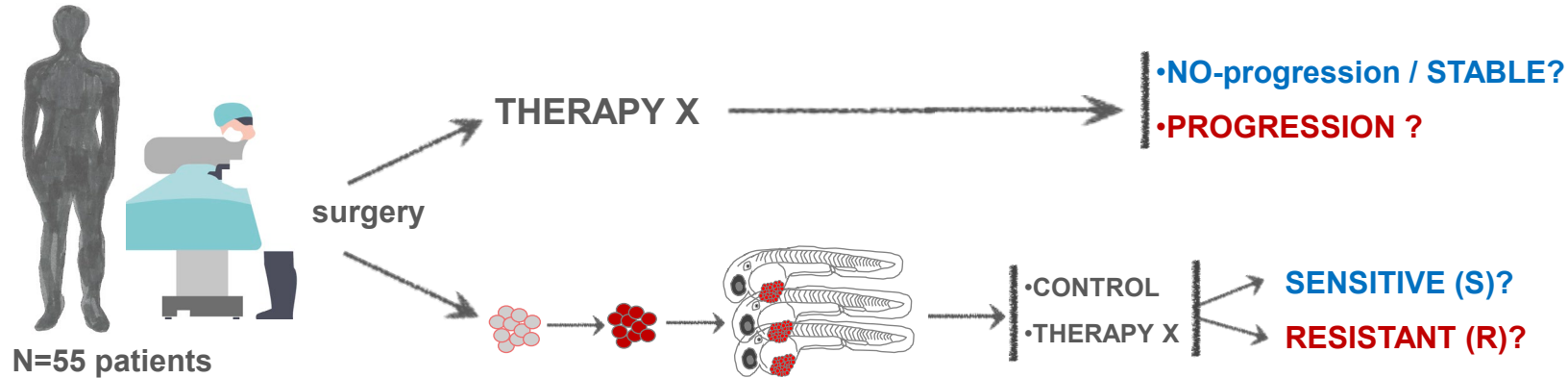


# Different Chemotherapy sensitivity *in vivo*





# CRC co-clinical study comparing the patient's clinical response to treatment with their matching zAvatars



		Colorectal Cancer	
		S	R
Response to therapy	NO-progression	25	8
	Progression	2	20

POSITIVE predicted value=92%  
NEGATIVE Predictive value=71%

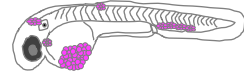
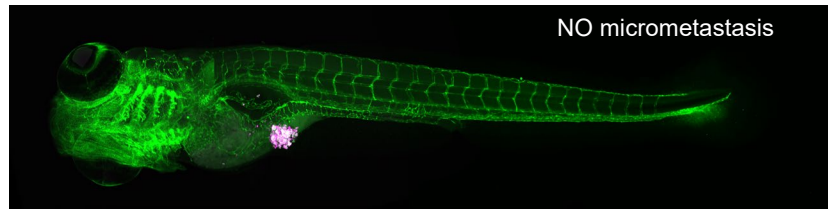




# Formation of micrometastasis in zAvatars is related with patient clinical progression

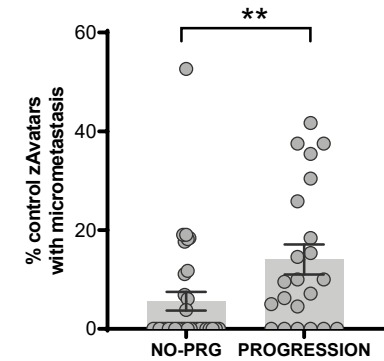
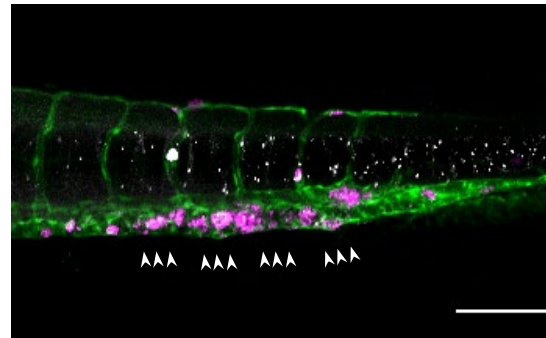
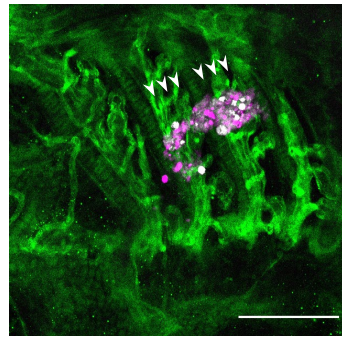
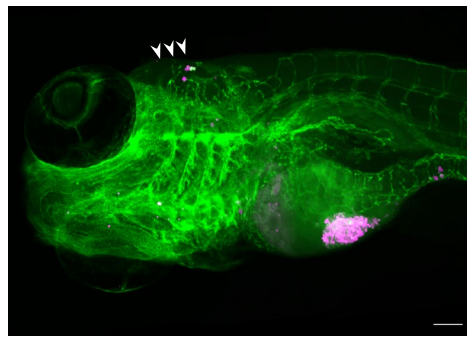
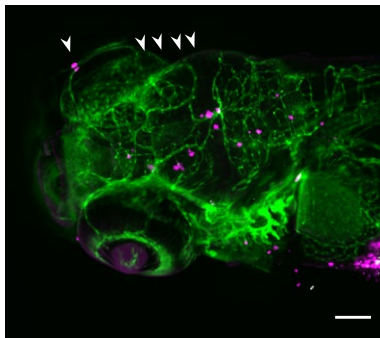


CRC patient tumor cells hMITO *Tg(fli1:eGFP)* 3dpi



CRC patients		NO MET	MET
Stage	II/III	21	11
	IV	7	16

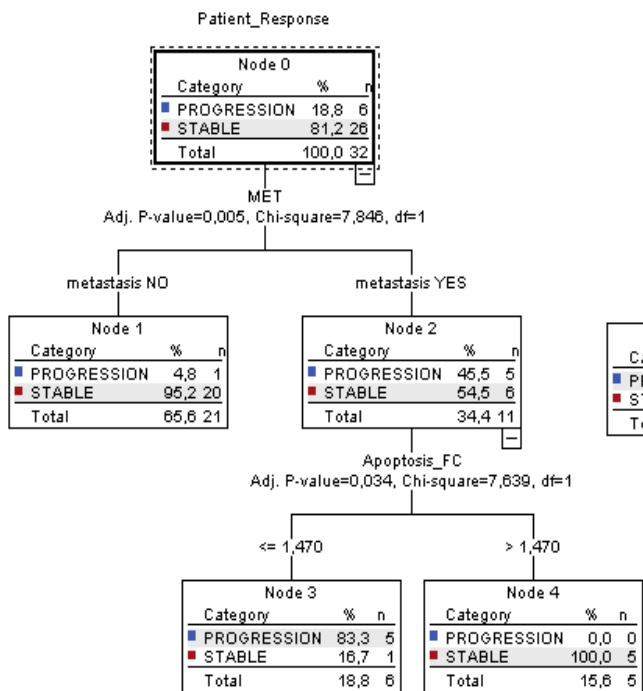
micrometastasis hMITO *Tg(fli1:eGFP)* 3dpi



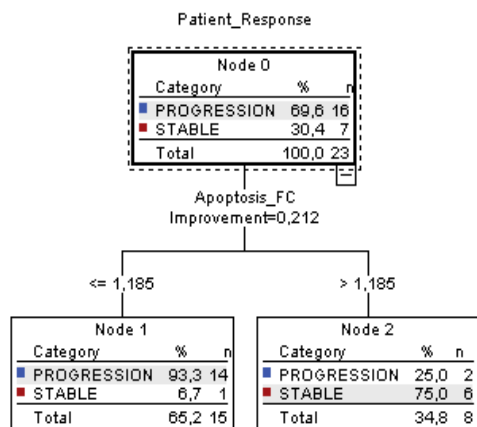
# Decision-tree model improves the predictive value of the zAvatar-test



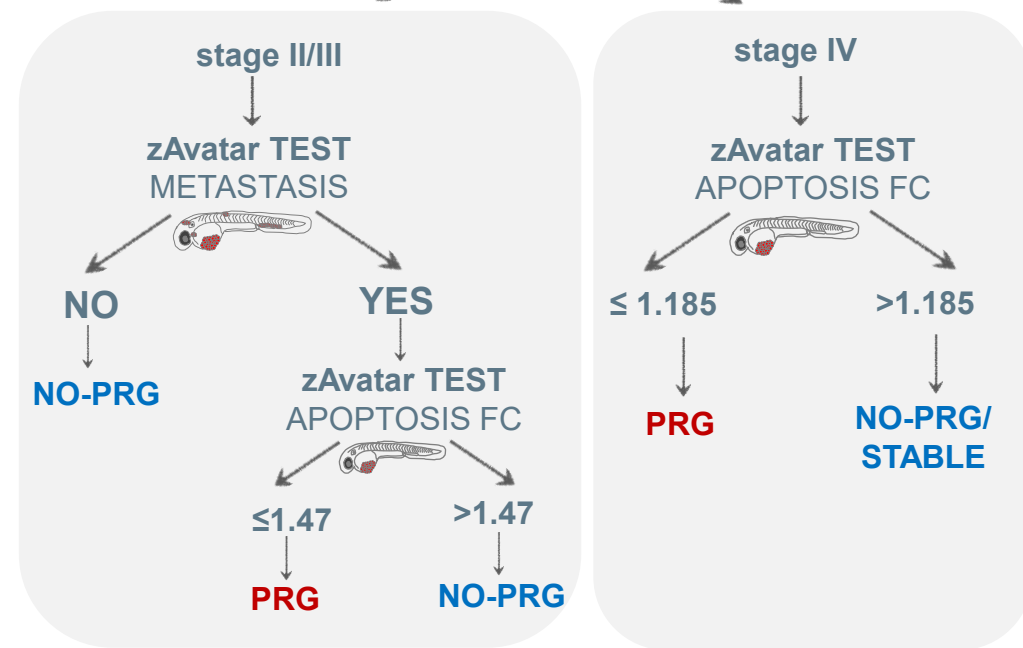
**Stage**



**Stage IV**



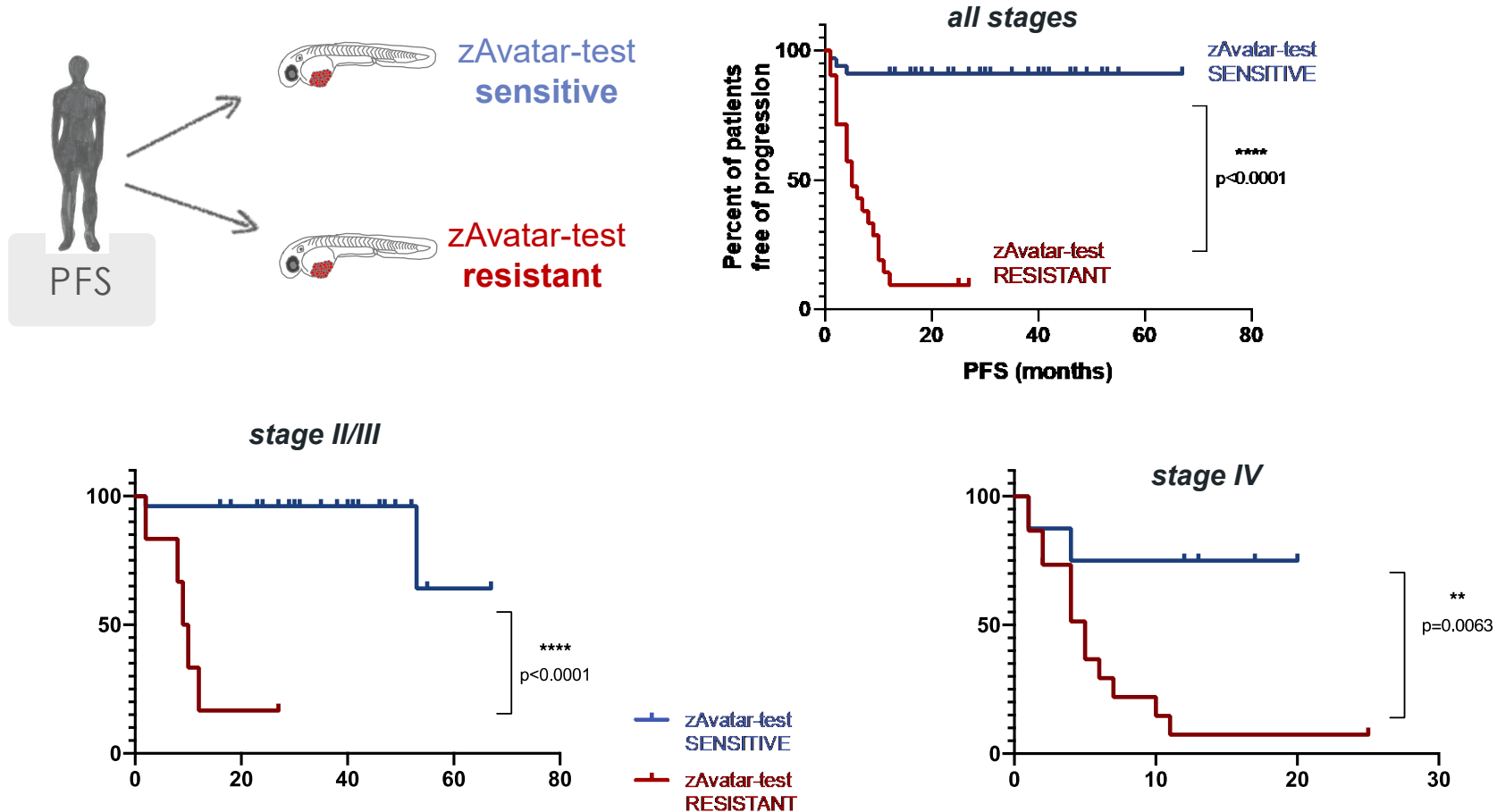
**CRC patients**



CRC patients		S	R	Total	Analysis	Result
Response to therapy	Stable	<b>31</b>	2	33	sensitivity	94%
	Progression	3	<b>19</b>	22	specificity	86%
Total		34	21	55	PPV	91%
					NPV	90%



# CRC patients whose zAvatars were **sensitive** to treatment have significantly longer progression free survival



# ACKNOWLEDGMENTS



## TEAM

Bruna Costa  
Raquel Mendes  
Marta Estrada  
Vanda Póvoa  
Catia R. Almeida  
Ana Beatriz Machado  
Marcia Fontes  
Filipa Amorim  
Salvador Ferreira  
Sara Cardoso

## FORMER STUDENTS

Ines Oliveira  
Mariana Rebordão  
Mayra Martinez Lopez  
Rita Almeida  
Luis Leite  
Ana Logrado  
Mariana Barroso  
Micaela Domingues  
Beatriz Varanda  
Mariana Maia Gil  
Magda Negrão  
Miguel Fuzeta

## COLLABORATORS

- Stefan Kauffman
- Alexandra Leroy
- Luis Costa
- A.Rita GRosso
- Pedro Moura Alves
- Valerie Paradis
- Gonçalo Bernardes
- João Barata
- Sergio Dias
- Marta Pojo
- António Jacinto

## VIDEO:

Alexandre Azinheira  
Hedi Young  
Marta Correia  
Marta Estrada



## MENTORSHIP

- Leonor Saúde
- Maria de Sousa

**PATIENTS &  
their  
FAMILIES**

## COLLABORATORS

- Digestive Unit- N. Figueiredo, C. Carvalho, P. Fidalgo, R Rio Tinto, L Fernandez, J. Azevedo, M Bispo
- Breast Unit - Fátima Cardoso, J. Ribeiro, MJ Cardoso, MJ Brito, H. Gouveia *et al*
- Radiotherapy Unit - Carlo Greco, Oriol Pares, Sandra Vieira
- Gynecology unit - H. Nabais, L Batarda, F Silva *et al*
- Neuro-Oncology unit- J Bravo Marques, Daniela Garcez, Catarina Viegas *et al*
- Lung Unit – Dr. Nuno Gil, Dr. Susana Simões
- Urology Unit - Jorge Fonseca *et al*
- Hematology Unit - Cristina João *et al*
- Histopathology Unit
- Molecular and Experimental Pathology Laboratory /BIOBANK- Mireia Castillo
- HPFF-Amadora Sintra - Dr. António Gomes *et al*



- FISH PLATFORM- C. Certal, J. Monteiro *et al*
- BIOBANK-M. Castilho *et al*
- Rodent Platform- I Campos *et al*
- Pharmacy- P. Bustorf *et al*
- Clinical Trials Unit- Manuela Seixas *et al.*
- ABBE Platform- D Arccardi *et al*
- Histology Platform- T.Carvalho *et al*
- CF Pre-award Team- Bruno Cena *et al*

## REAGENTS

- Monica B-Dias, IGC,
- Lars Jansen, IGC
- Steven Renshaw
- Farida Djouad

