

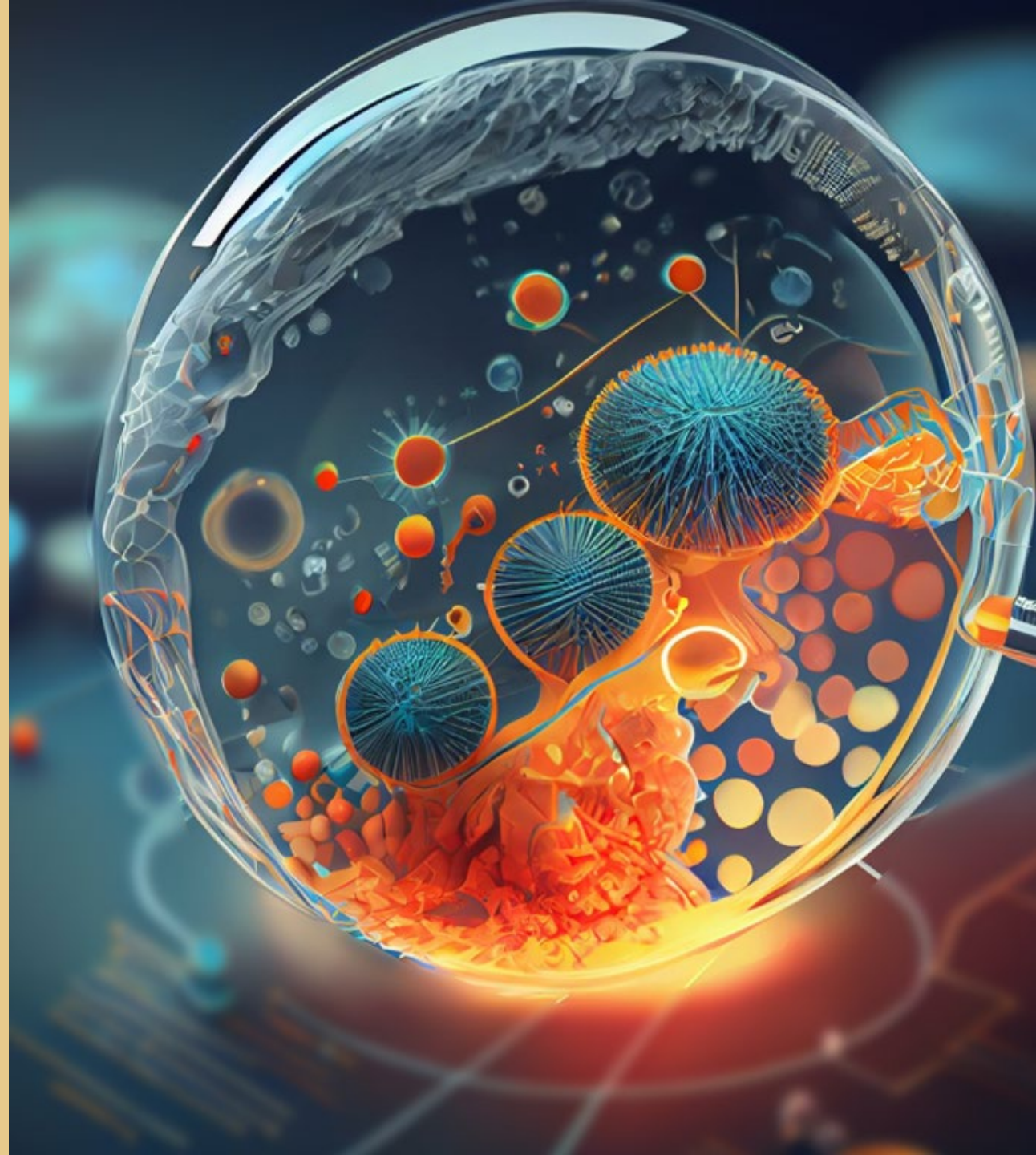


# Efficacy of the peptide drug conjugates melflufen and PDCX in venetoclax resistant acute myeloid leukemia

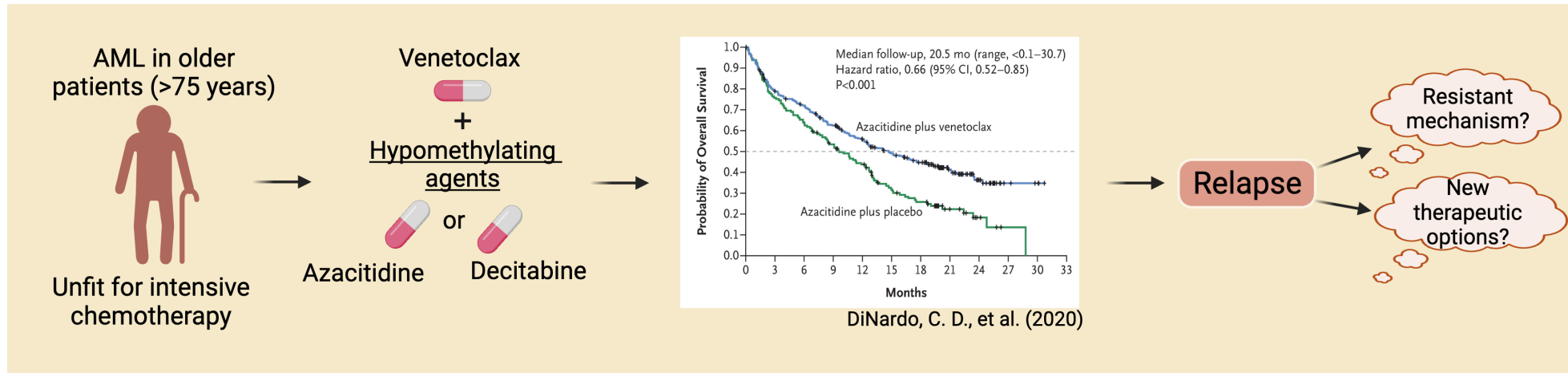
Romika Kumari

26.09.2024

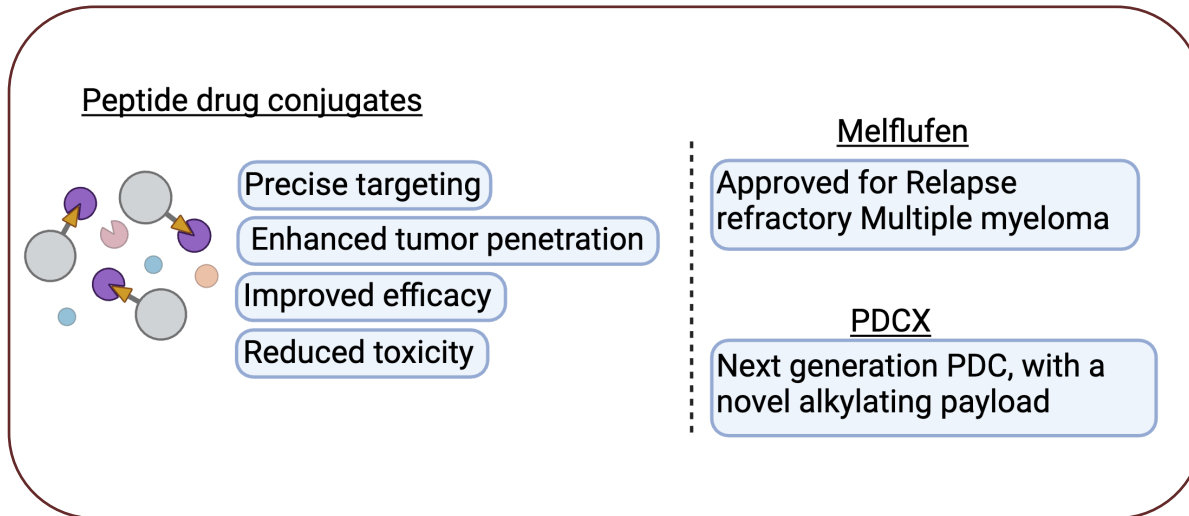
**Poster Number #8**



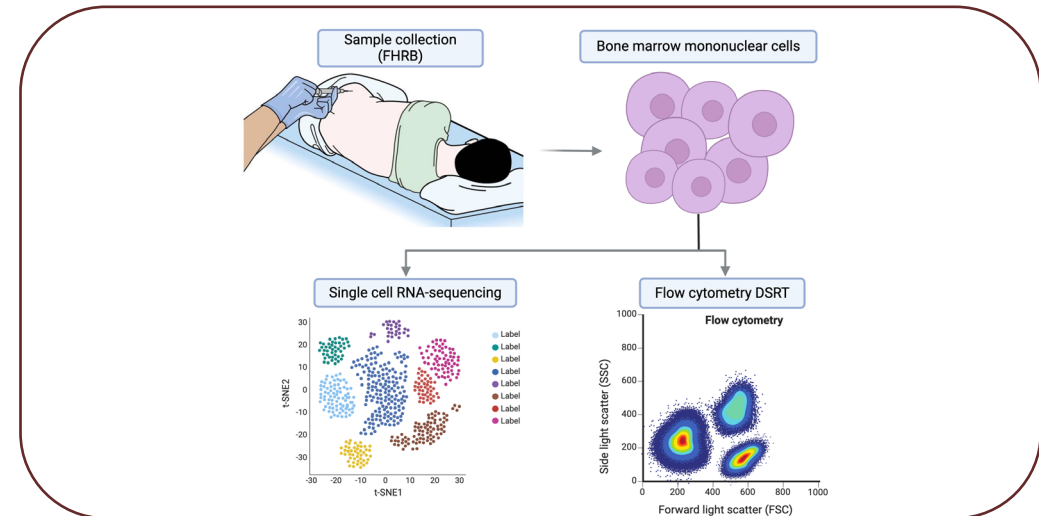
# Background



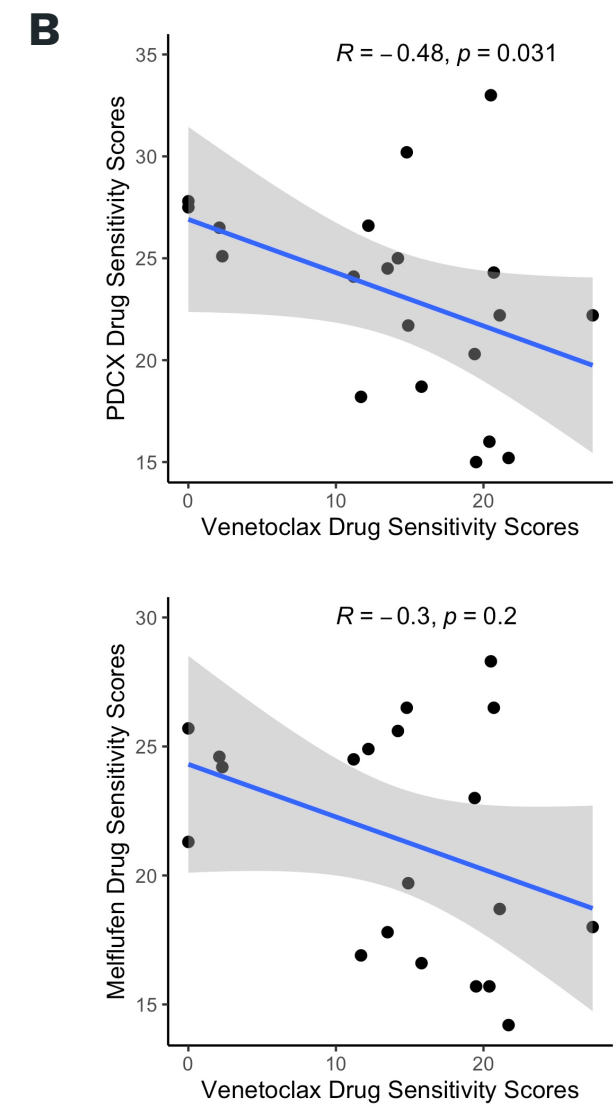
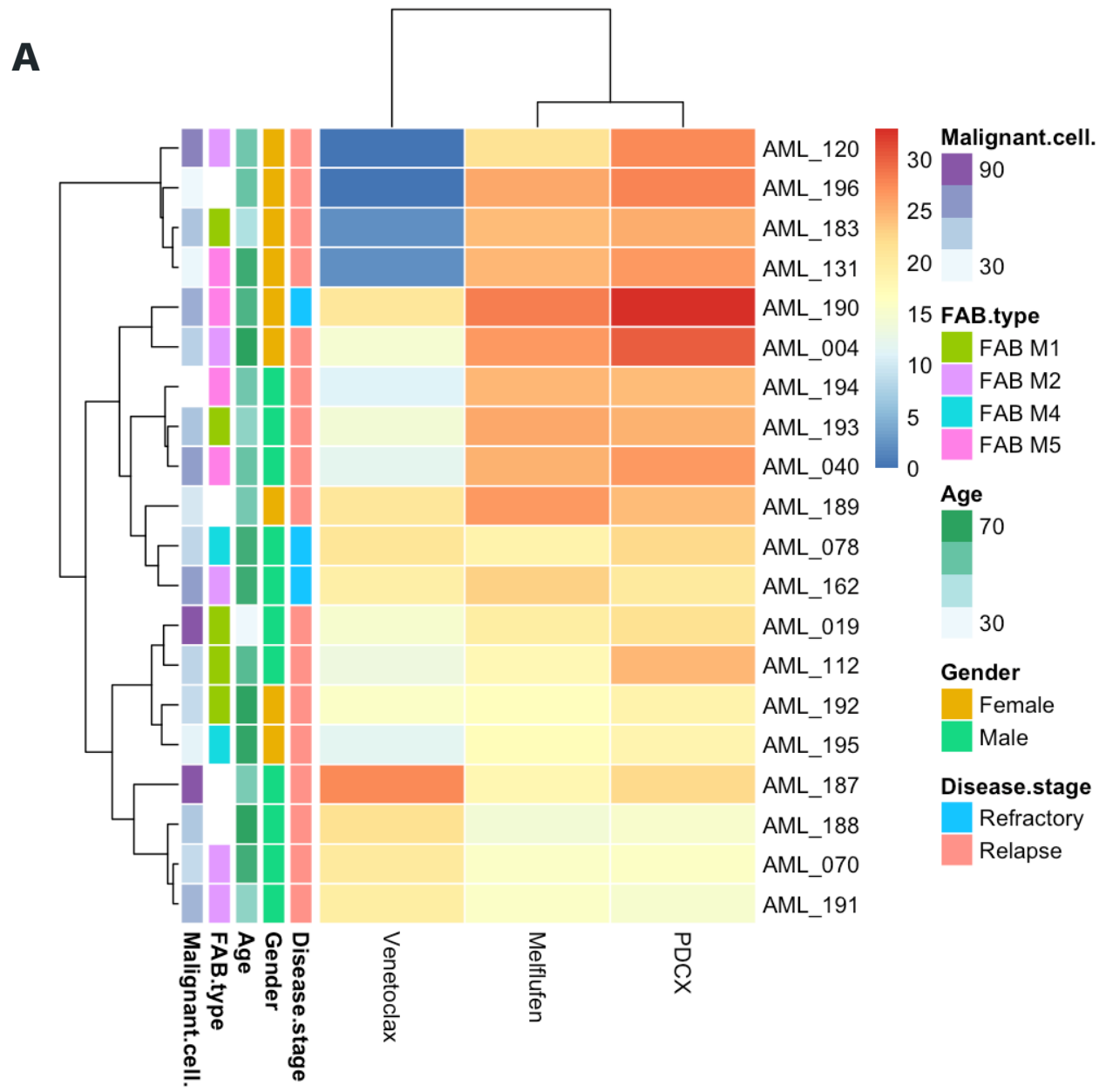
## New therapeutic options



## Workflow

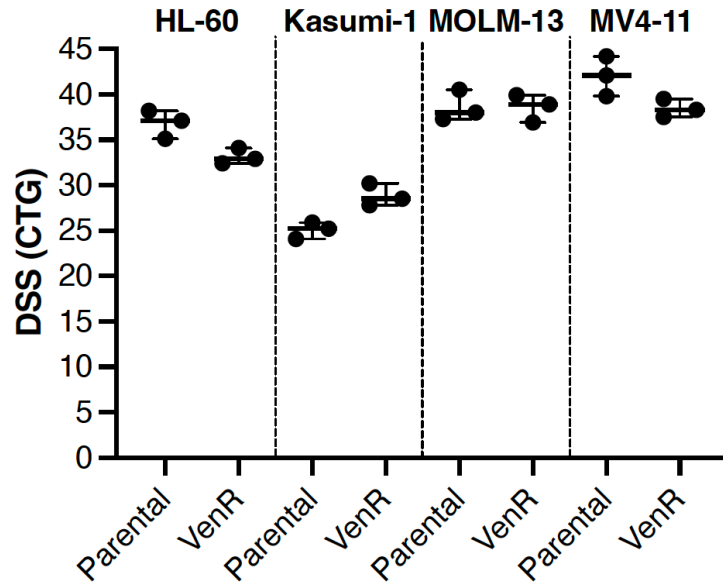


# Venetoclax resistant samples are sensitive to PDCX and Melflufen



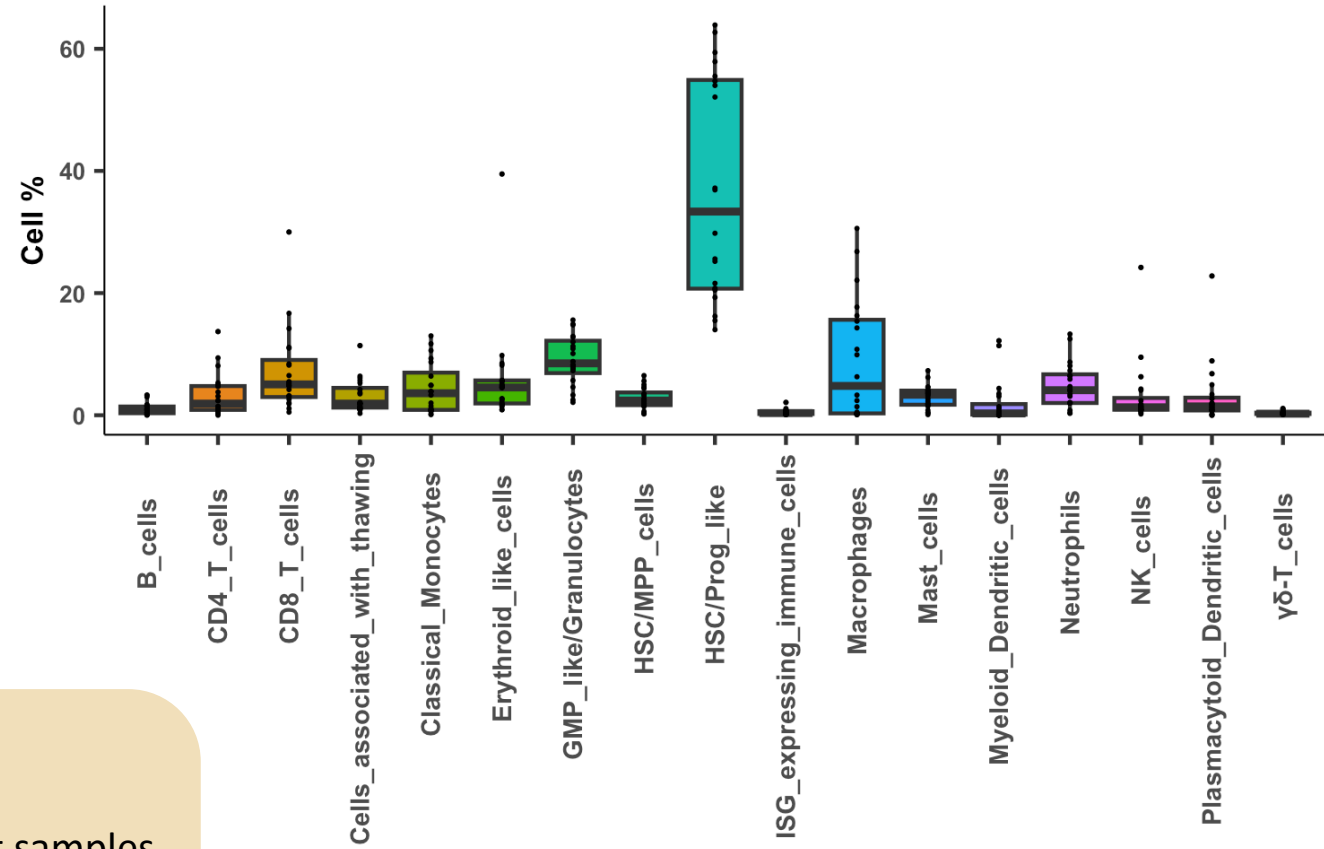
Venetoclax resistant cell lines are sensitivity to PDCX

**A**



Single cell RNA-seq: Percentage of different cell-type populations

**B**



Conclusion

- The PDCs, Melflufen and PDCX are highly active in AML patient samples.
- The models with primary or acquired resistance to venetoclax, show high sensitivity to Melflufen and PDCX.

# Acknowledgement, Affiliation and disclosure

## Heckman group

- Caroline A. Heckman
- Juho J. Miettinen
- Ezgi June Olgaç
- Mahesh Tambe
- Nemo Ikonen
- Minna H. Suvela
- Maiju-Emilia Huppunen

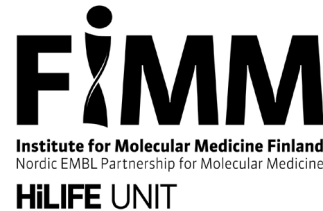
## Oncopeptides

- Stefan Svensson  
Gelius
- Klara Acs

## Single-Cell Analytics, FIMM

## High Throughput Biomedicine Unit

## Finnish Hematology Research Biobank



## Disclosure

Nothing to disclose